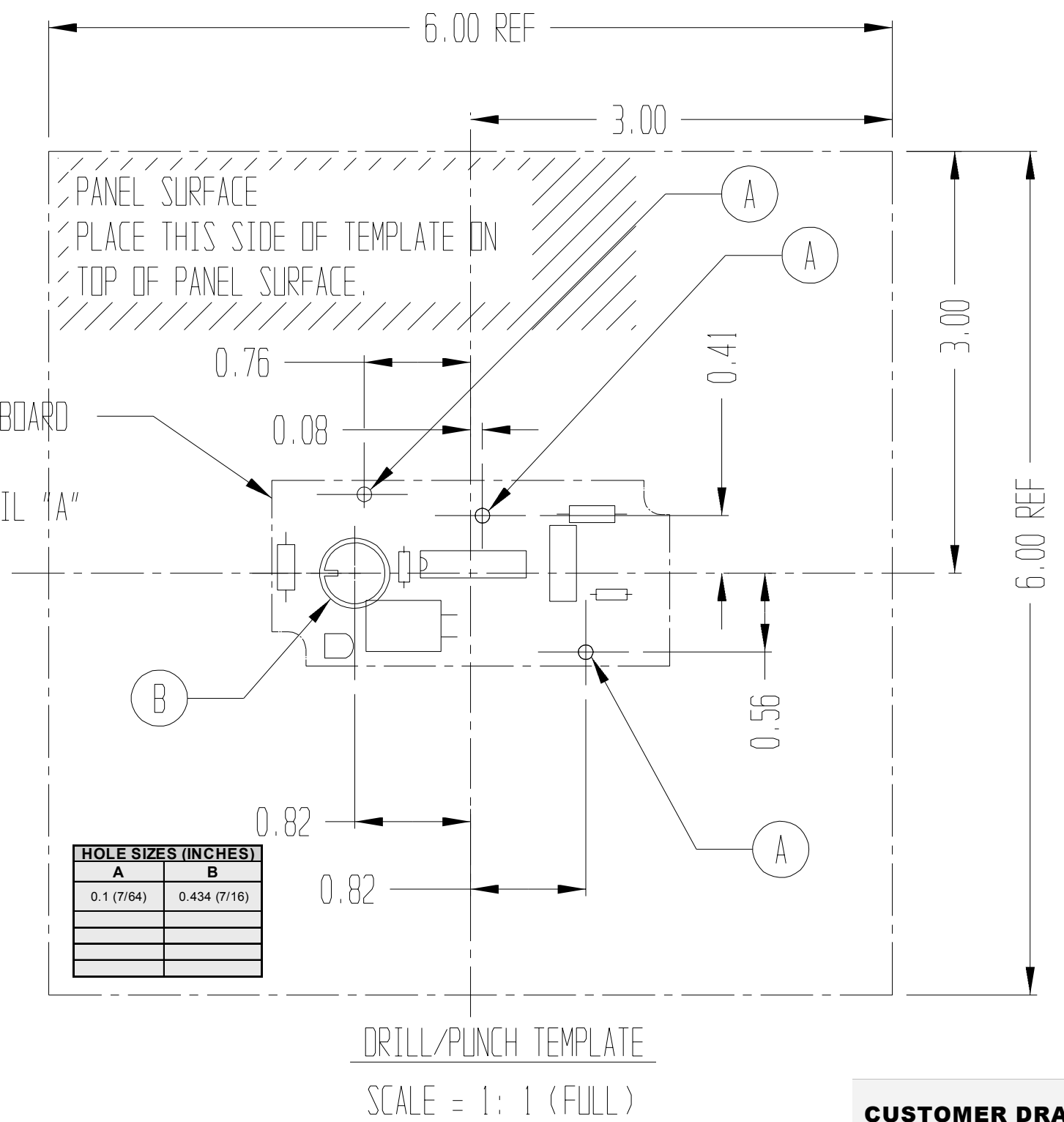


- NOTES:
1. DIMENSIONS ARE IN INCHES, UNLESS OTHERWISE SPECIFIED.
  2. SUPPORT LOCATION IS OPTIONAL, BUT RECOMMENDED.
  3. ADD WASHERS WHEN USING 1/32" PANEL MATERIALS. SEE DETAIL "A".
  4. PANEL TO PCB SEPARATION WHEN USING NYLON PCB SUPPORTS.
  5. SEE DRAWING MD755-PCB-203 FOR PANEL DRILL/PUNCH TEMPLATE.
  6. MAXIMUM PANEL THICKNESS NOT TO EXCEED 1/16". WHEN USING THIN PANELS REINFORCEMENT IS RECOMMENDED OR MOUNTING SURFACE SHOULD NOT EXCEED 6" X 6". SEE DETAIL "B".
  7. SEE DRAWING MD755-PCB-220 FOR PCB INTERCONNECT CABLING.

NYLON PCB SUPPORTS  
"POP-IN" TYPE  
3 PLACES AS SHOWN  
SEE NOTE 2

1/32" PANEL (NOMINAL)  
ALUMINUM -20 GA  
STEEL -22 GA  
ACRYLIC - .0.03  
SEE NOTE 6.



**CUSTOMER DRAWING**

ADDITIONAL APPROVALS	DATE	QTY REQD	UNITS	CAGE CODE	PART OR IDENTIFYING NO	NOMENCLATURE OR DESCRIPTION	MATERIAL SPECIFICATION	FIND NO
MATERIALS & PROCESSES		UNLESS OTHERWISE SPECIFIED: DIMENSIONS ARE IN INCHES (mm). TOLERANCES ARE: DECIMALS: X ± .XX ±						
QUALITY ASSURANCE		DASH NO		EXT ASSEMBL		USED ON		CONTRACT NO.
MANUFACTURING ENGINEERING		APPLICATION		PROJECTION:		THIRD ANGLE		APPROVALS
TREATMENT		FINISH		DRAWN		CHECKED		DATE
								ENGINEER
								APPROVED
								RELATED FILES
								TITLE
								SIZE
								DWG NO
								SCALE
								1:1
								SHEET
								1 OF 1
								RELEASED DATE
								10-Mar-15
								REV
								0



**MD755-PCB  
PANEL DRILL/PUNCH LOCATIONS**

SIZE **B** DWG NO **MD-755-FLG010** REV **0**